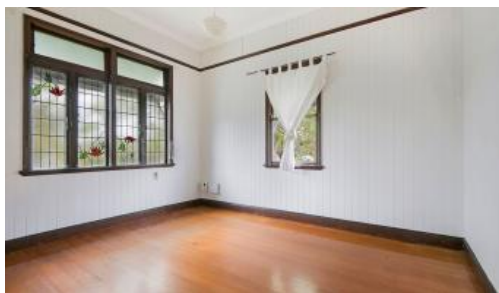




100 Zillman Road, Hendra



4 BEDROOM CHARACTER HOME

4 1

A Beautifully spacious Queenslander in the heart of Hendra offers uncompromising quality living.

Elevated to capture cool breezes the upper level flows seamlessly from the front veranda through to the rear of the home.

High ceilings throughout, this original Queensland home was designed with an open plan layout.

Featuring 4 bedrooms, 1 bathroom with charming front & side verandas.

Features:

- * Free flowing living, dining and kitchen
- * 4 Large bedrooms
- * 1 main bathroom
- * Fresh and inviting light-filled interiors
- * Large veranda (front & side) - Perfect for those that love

Price \$550 per week

Property Type Rental

Property ID 156

Agent Details

David Lemke - +61 33574888

Office Details

MGM Homes

497 Lutwyche Rd Lutwyche,
QLD, 4030 Australia
(07) 3357 4888

MGM MICHAEL McMAHON
HOMES

to entertain

- * High ceilings throughout
- * Gas oven and stove top

Location:

- * Eagle Farm Racecourse – 4 minute drive
- * Racecourse Road precinct – 4 minute drive
- * Brisbane Airport – 10 minute drive
- * CBD – 19 minute drive

PLEASE REGISTER ONLINE TO VIEW AND RECEIVE A LINK 2APPLY

The above information provided has been furnished to us by the vendor/s. We have not verified whether or not that information is accurate and do not have any belief in one way or the other in its accuracy. We do not accept any responsibility to any person for its accuracy and do no more than pass it on. All interested parties should make and rely upon their own inquiries in order to determine whether or not this information is in fact accurate.