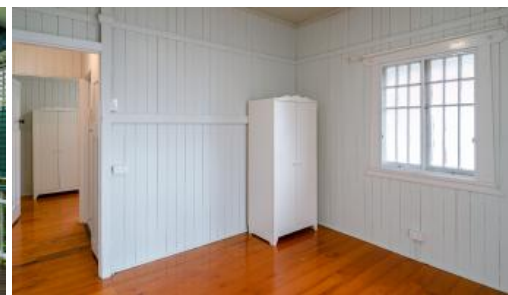




35 Lowerson Street, Lutwyche



Walking distance to everything and Electricity included in the rent.

This conveniently located home has 3 Bedrooms with robes plus sun room/office. Separate dining room. Polished timber floors. Large kitchen with dishwasher. Ceiling fans as well as gas burner heater in the lounge. Spacious rear deck overlooking peaceful back yard. Plenty of Storage underneath. Electricity is included in the rent. Plenty of off street parking. Walking distance to schools, shops and transport. View today before it is gone.

The above information provided has been furnished to us by the vendor/s. We have not verified whether or not that information is accurate and do not have any belief in one way or the other in its accuracy. We do not accept any responsibility to any person for its accuracy and do no more than pass it on. All interested parties should make and rely upon their own inquiries in order to determine whether or not this information is in fact accurate.

3 1 4 635 m2

Price \$550 per week including electricity

Property Type Rental

Property ID 104

Land Area 635 m2

Agent Details

David Lemke - +61 33574888

Office Details

MGM Homes
497 Lutwyche Rd Lutwyche,
QLD, 4030 Australia
(07) 3357 4888

